

SAND DIEGO, CA
"LEADERSHIP STARTS HERE"

FUN THINGS TO DO IN THE CITY WHERE LEADERSHIP STARTS!

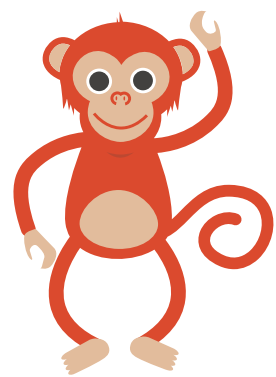


BALBOA PARK

Balboa Park is a 1,200-acre urban cultural park in San Diego, California, United States. In addition to open space areas, natural vegetation zones, green belts, gardens, and walking paths, it contains museums, several theaters, and the world-famous San Diego Zoo.

SAN DIEGO ZOO

The San Diego Zoo is a zoo in Balboa Park, San Diego, California, housing more than 3,500 animals of more than 650 species and subspecies. Its parent organization, San Diego Zoo Global, is one of the largest zoological membership associations in the world.

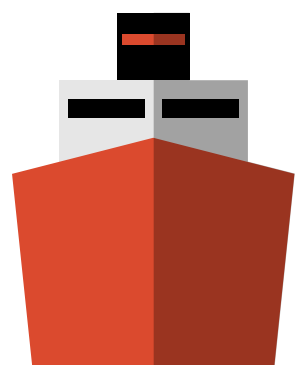


LA JOLLA COVE

La Jolla Cove is a small, picturesque cove and beach that is surrounded by cliffs in La Jolla, San Diego, California. The Cove is protected as part of a marine reserve; underwater it is very rich in marine life, and is popular with snorkelers, swimmers and scuba divers.

USS MIDWAY MUSEUM

The USS Midway Museum is a historical naval aircraft carrier museum located in downtown San Diego, California at Navy Pier. The museum consists of the aircraft carrier Midway. The ship houses an extensive collection of aircraft, many of which were built in Southern California.



BELMONT PARK

Belmont Park is a historic amusement park located on Ocean Front at Surfrider Square in the Mission Bay area of San Diego, California. The park was developed by sugar magnate John D. Spreckels and opened on July 4, 1925 as the Mission Beach Amusement Center.

BIRCH AQUARIUM

Birch Aquarium at Scripps is an aquarium and the public outreach center for Scripps Institution of Oceanography at the University of California, San Diego. Accredited by the Association of Zoos and Aquariums.



WHAT ARE YOU WAITING FOR? VISIT SAN DIEGO!

NEW YORK, NY
"City that never sleeps"

FUN THINGS TO DO IN THE CITY THAT NEVER SLEEPS!



STATUE OF LIBERTY

The Statue of Liberty is a colossal neoclassical sculpture on Liberty Island in New York Harbor in New York, in the United States. The copper statue, a gift from the people of France to the people of the United States, was designed by French sculptor Frédéric Auguste Bartholdi.

CENTRAL PARK

Central Park is an urban park in Manhattan, New York City, located between the Upper West Side and the Upper East Side. It is the fifth-largest park in New York City by area, covering 843 acres. Central Park is the most visited urban park in the United States.

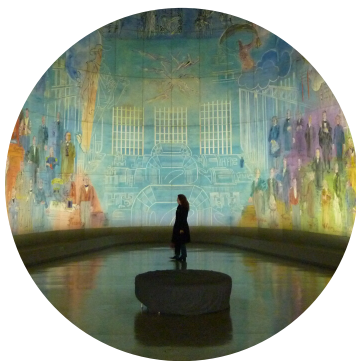


TIMES SQUARE

Times Square is a major commercial intersection, tourist destination, entertainment center, and neighborhood in the Midtown Manhattan section of New York City, at the junction of Broadway and Seventh Avenue.

EMPIRE STATE BUILDING

The Empire State Building is a 102-story Art Deco skyscraper in Midtown Manhattan, New York City. It was designed by Shreve, Lamb & Harmon and completed in 1931. The building has a roof height of 1,250 feet and stands a total of 1,454 feet tall.



THE MET MUSEUM OF ART

Belmont Park is a historic amusement park located on Ocean Front at Surf Rider Square in the Mission Bay area of San Diego, California. The park was developed by sugar magnate John D. Spreckels and opened on July 4, 1925 as the Mission Beach Amusement Center.

BROADWAY

Broadway is a road in the U.S. state of New York. Broadway runs from State Street at Bowling Green for 13 mi through the borough of Manhattan and 2 mi through the Bronx, exiting north from the city to run an additional 18 miles.



WHAT ARE YOU WAITING FOR? VISIT NEW YORK CITY!